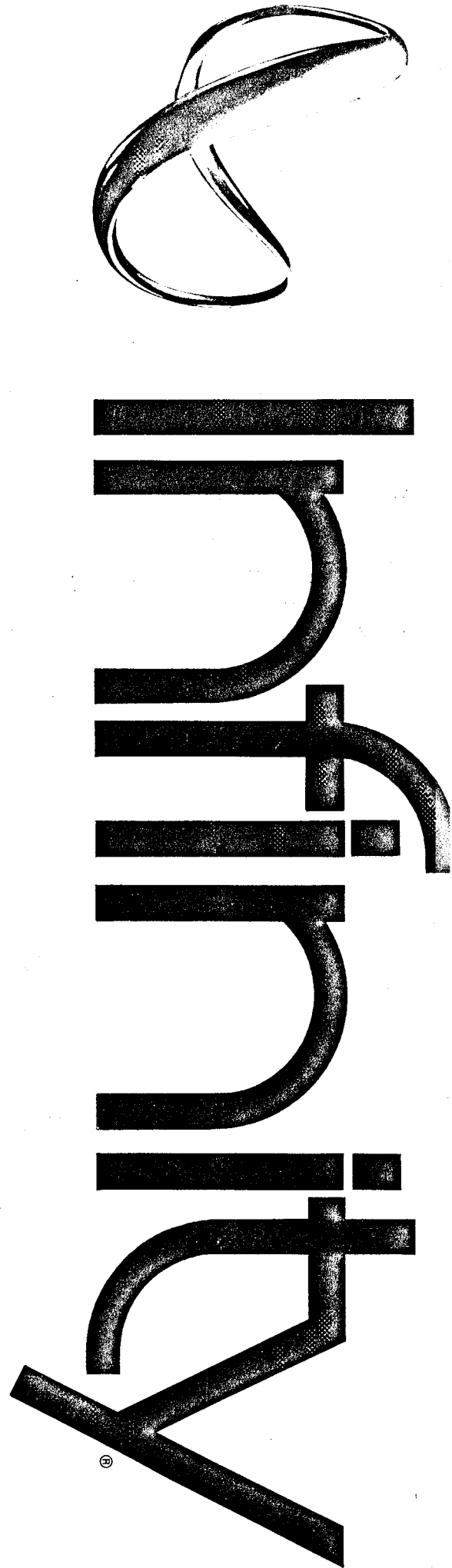


Instructions
for mounting your
InfiniTesimal III
Speaker



Mounting

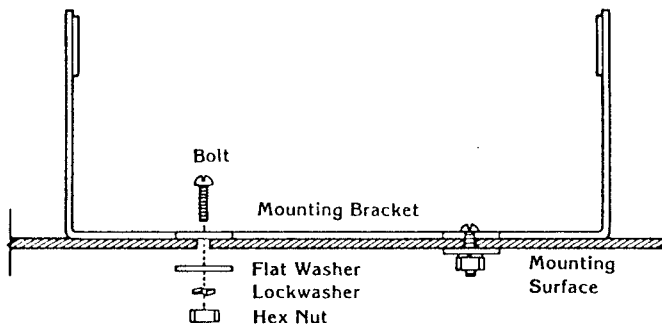
Note that these speakers are very heavy. All precautions to prevent them from shaking loose from or tearing apart the mounting surface must be taken.

Fasten the Mounting Bracket to your mounting surface through two .256" diameter drilled holes, using the 1/4-20 bolts. Two lengths of bolts have been included to accommodate various thicknesses in mounting surfaces. If the mounting surface is panelling, thin metal, or pressed composition material (as in many rear parcel shelves), use of the large flat washers will minimize vibration damage by spreading the stress over a large area.

The 1/4" Split Ring Lockwashers will help prevent nuts from working loose by applying constant pressure against the nuts.

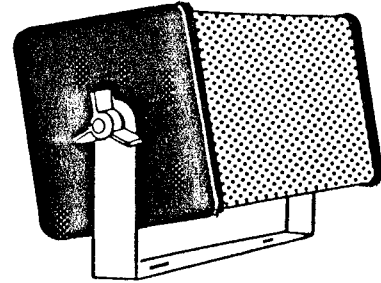
In general, Figure 1 illustrates the method preferred:

Figure 1



The speaker will then mount to the bracket using the plastic knobs included. (See figure 2.)

Figure 2



Infinity strives always to update and improve existing products, as well as to create new ones. So the specifications and construction details in this Infinity publication and others are subject to change without notice.

Parts List

First check your kit to make sure that all the parts required for mounting your Infiniti/tesimal III's have been included.

PART #	DESCRIPTION	QUANTITY
.556...1003	Mounting Bracket	2
.800...0998	¼-20x1½" Slot Truss Blk	4
.800...1005	¼-20x¾" Slot Truss Blk	4
.810...0929	¼-20 Hex Nut Blk	4
.820...0936	¾" Flat Washer Blk	8
.827...0943	¼" Split Lockwasher Blk	5
.710...0593	Plastic Knob Davies 3035 BC	4

Positioning

It is best to mount the speakers in such a fashion that they "fire" directly toward the listening position, and have no obstructions directly in front of the drivers.

All loudspeakers sound best when they are positioned as far as possible from walls and corners. In this kit, all hardware has been included to affect a solid mount, but due to the immense variety of automobiles (not to mention vans and boats) some imagination may be called for to determine how to best mount your speakers.

Of course good sonics are second in importance to unobstructed driver vision.